

Power Reduction

Power Reduction (PR) is used for the control of all kinds of outdoor lighting systems, operating in two power stages. PR has an inbuilt timer that is synchronized daily and automatically recalculates the programmed switch time. The only external control device is a photocell control.

PR works automatically without cables or radio signals.

The switch times can easily be adjusted from one place.

Tested by SEMKO with EN 60730-2-1:1997

Lamps:

Highpressurenatrium 35-400 W

Quicksilver 50-400 W

PR varieties:

CT-01/P is fitted to a 2-step transformer with max. 400 VA.

CT-01/PC is fitted to Osram Citylight:s transformer.

NT-30/150 has an inbuilt transformer with max. 150 VA.

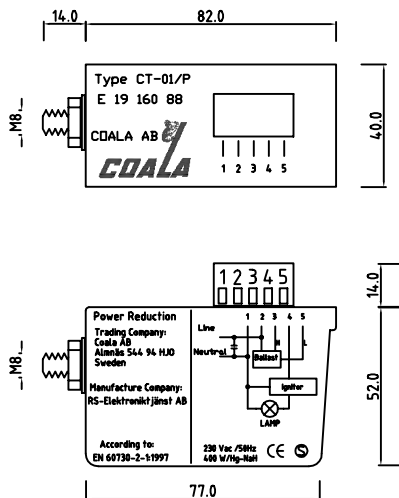
NT-30/400 as above with max. 400 VA

Art. nr	CT-01/P	CT-01/PC	NT-30/150	NT-30/400
E. Nr	19 160 88	19 160 97	19 160 98	19 160 99
Voltage	230 Volt	230 Volt	230 Volt	230 Volt
Frequency	50 Hz	50 Hz	50 Hz	50 Hz
Max. temp.	+80 C	+80 C	+80 C	+80 C
Min. temp	-40 C	-40 C	-40 C	-40 C
Mounting example	In the lightfitting or separately on the pole..	In the lightfitting or directly on or inside poles.	Directly on or inside poles.	Directly on or inside poles.

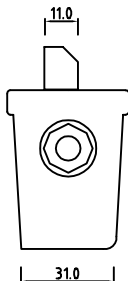
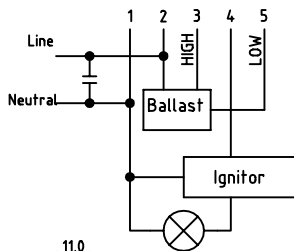
Trading Company
Coala AB
Almnäs 544 94 HJO

Manufacturer Company
R-S Elektronikjänst AB
Box 40 544 21 HJO

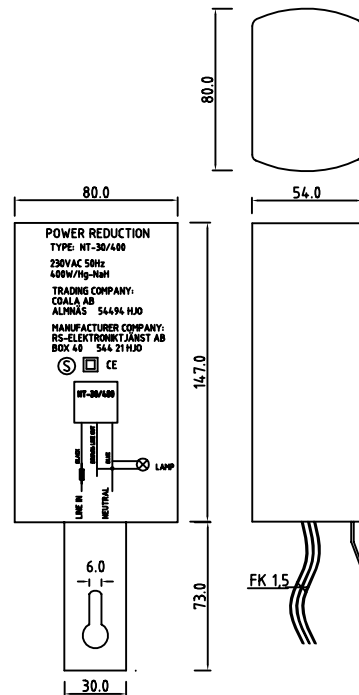
CT-01/P



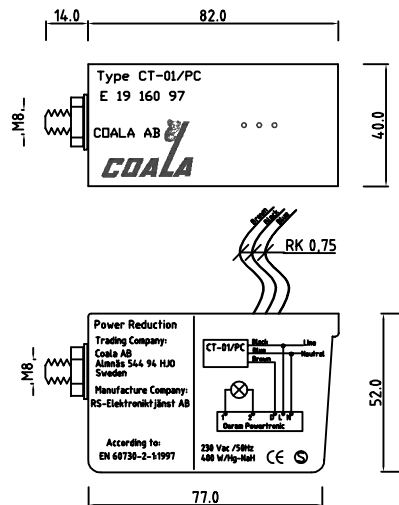
SCHEMA



NT-30/150/400



CT-01/PC



SCHEMA

